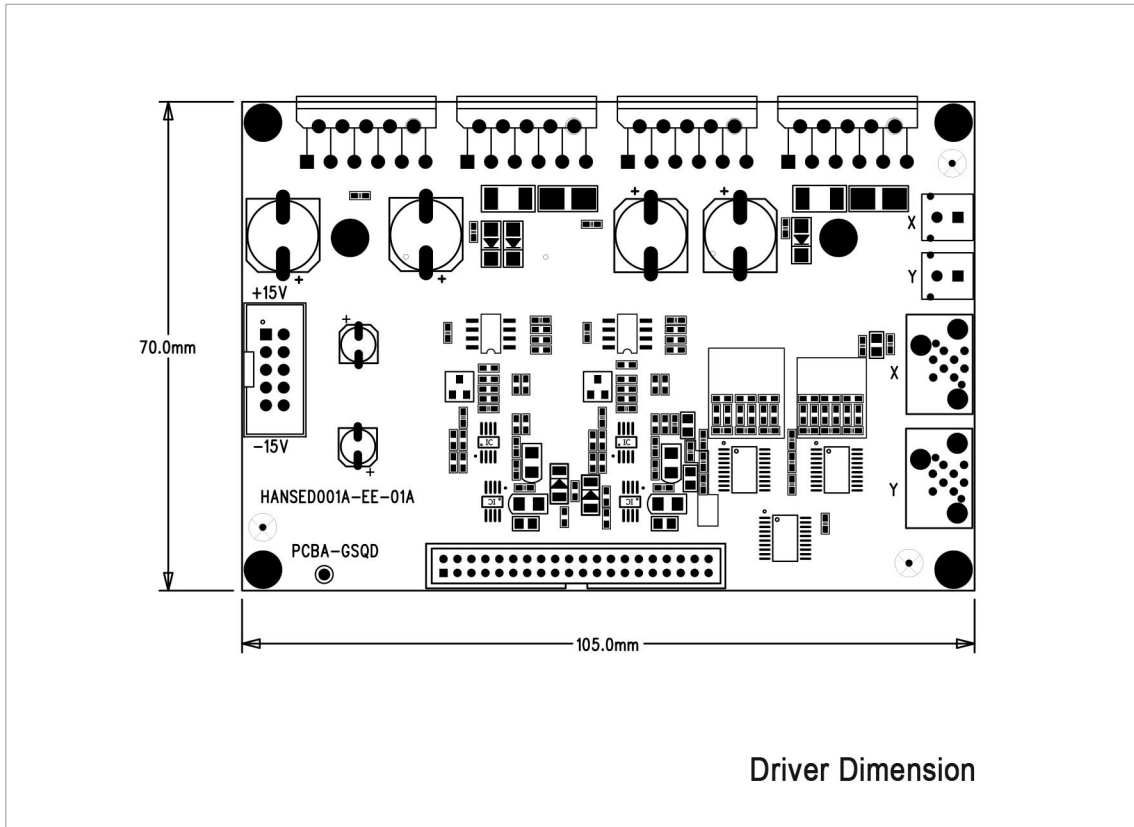
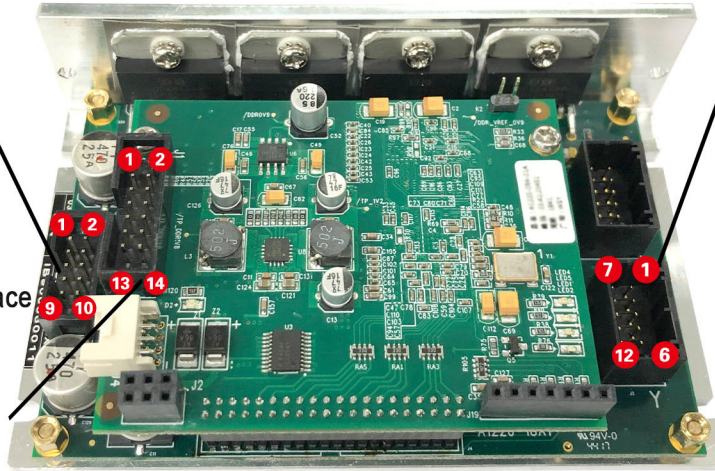


UltraGalvo Big Driver



J5: Power Interface
 Pin2, 3, 4: +15VIN
 Pin8, 9, 10: -15VIN
 Pin5, 6, 7: GND

J1: Marking Signal Interface
 Pin1: CLK-
 Pin2: CLK+
 Pin3: SYNC-
 Pin4: SYNC+
 Pin5: XCHANNEL-
 Pin6: XCHANNEL+
 Pin7: YCHANNEL-
 Pin8: YCHANNEL+
 Pin9, 11, 13: FB(1-3)-
 Pin10, 12, 14: FB(1-3)+



J2: Motor Signal Control Port
 Pin1: MOTOR1+
 Pin2: -15V
 Pin3, 4, 5, 9: GND
 Pin6: M1_T+(Preheating Circuit Control End)
 Pin7: MOTOR1- (Hang In The Air)
 Pin8: HEATER1(Preheating Circuit Detection End)
 Pin10: LED_AGC (Photocell Voltage Detection Terminal)
 Pin11: POS1_IN-
 Pin12: POS1_IN+

深圳市大族思特科技有限公司
 Shenzhen Han's Scanner S&T Co., Ltd.

+86-(0)755-23041055

www.hansscanner.com

hansscanner@hanslaser.com

深圳市宝安区福永镇重庆路128号大族激光4栋4楼

4F, Building 4, Han's Laser Production Base, No. 128, Chongqing Road, Fuyong Street, Baoan District, Shenzhen City, Guangdong, P.R. China.



HAN'S SCANNER

大族思特

